

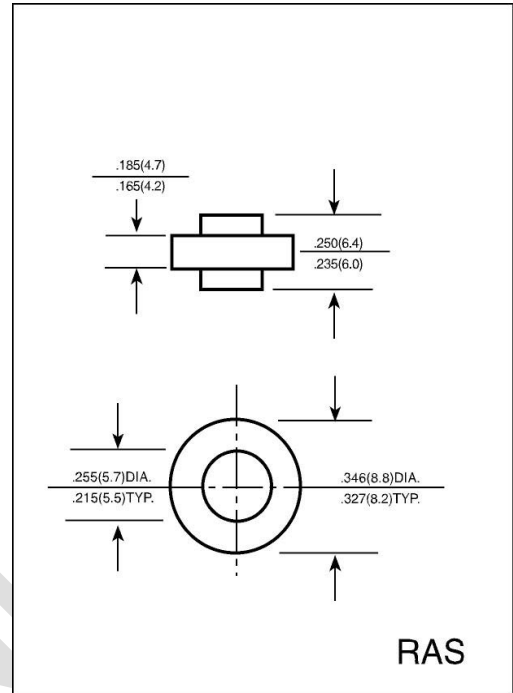
AUTOMOTIVE RECTIFIER

FEATURES

- Low leakage
- Low forward voltage drop
- High current capability
- High forward surge current capability

MECHANICAL DATA

- Case: transfer molded plastic
- Epoxy: UL94V - 0 rate flame retardant.
- Polarity: Color ring denotes cathode end.
- Lead: Plated slug, solderable per MIL - STD - 202E method 208C
- Mounting position: Any
- Weight: 0.064 ounce, 1.82gram



MAXIMUM RATINGS AND ELECTRICAL CHARACTERISTICS

- Ratings at 25°C ambient temperature unless otherwise specified
- Single phase, half wave, 60Hz, resistive or inductive load.
- For capacitive load derate current by 20%

	SYMBOLS	RAS 1505	RAS 151	RAS 152	RAS 154	RAS 156	RAS 158	RAS 1510	UNIT
Maximum Repetitive Peak Reverse Voltage	V_{RRM}	50	100	200	400	600	800	1000	Volts
Maximum RMS Voltage	V_{RMS}	35	70	140	280	420	560	700	Volts
Maximum DC Blocking Voltage	V_{DC}	50	100	200	400	600	800	1000	Volts
Maximum Average Forward Rectified Current, at $T_C = 125^\circ C$	$I_{(AV)}$	15.0							Amps
Peak Forward Surge Current 8.3ms single half sine - wave superimposed on rated load (JEDEC method)	I_{FSM}	400							Amps
Maximum Instantaneous Forward Voltage at 15 A	V_F	1.0							Volts
Maximum DC Reverse Current at rated DC blocking voltage	$T_A = 25^\circ C$	I_R							μA
	$T_C = 100^\circ C$								
Typical Thermal Resistance	$R_{\theta JC}$	1.0							$^\circ C/W$
Operating and Storage Temperature Range	T_J, T_{STG}	(-65 to +175)							$^\circ C$
Polarity and voltage denotion color band		Red	Yellow	Sliver	Orange	Green	Blue	Violet	

NOTES:

1. Enough heatsink must be considered in application.